

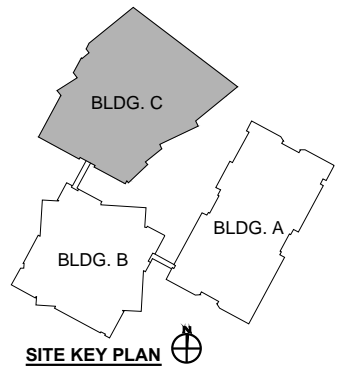
**NOTE:**  
 THIS PARTIAL PLAN IS FOR REFERENCE ONLY. ALL DIMENSIONS ARE TO BE VERIFIED IN THE FIELD PRIOR TO TENANT IMPROVEMENTS.

— 6' high partition  
 | 4' high partition

January 2024

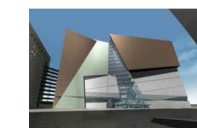


**C-1565**  
**13,783 SF**



**WORLD MARKET CENTER BUILDING 'C'**  
**C-1565 ENLARGED FLOOR PLAN**

SCALE: 3/32" = 1'-0"



PROJECT NO:  
 DATE: November 12, 2012  
 SCALE: 1" = 500'  
 NORTH